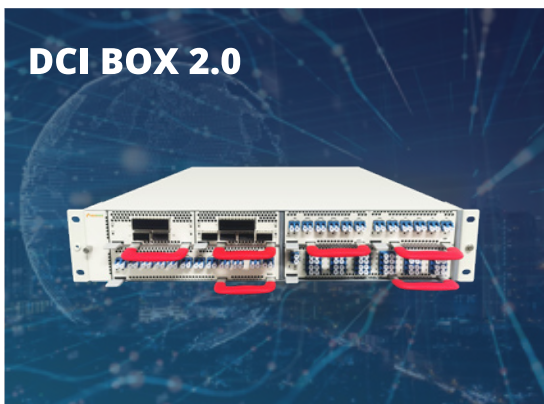


# OPEN DCI DWDM SOLUTIONS

Smart management | Plug and play | Economy



**DCI BOX 2.0**



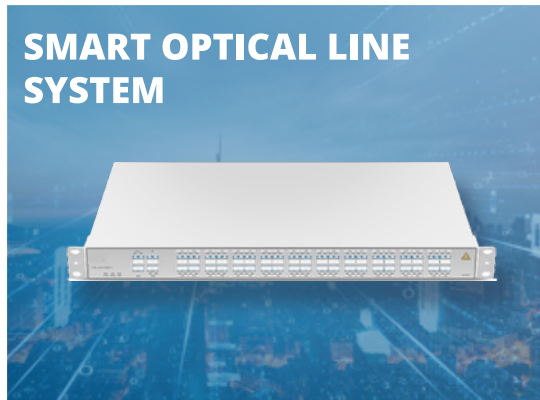
**1U 800G DCI DWDM  
SMART BOX**



**400G QSFP DD ZR COHERENT  
OPTICAL MODULE**



**SMART OPTICAL LINE  
SYSTEM**

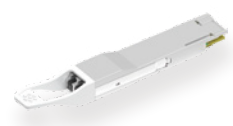
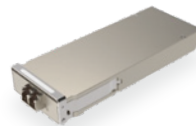
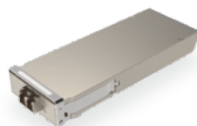
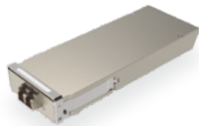


# OPEN DCI DWDM Products Portfolio and Solutions

Product Features and Model Recommendations		1U 800G DWDM Smart Box	Smart Optical Multiplexing Line System	1U BOX DCI 1.0	2U BOX DCI 2.0
Customer Planning Maximum Interconnect Capacity		1*100GE~8*100GE	10G service: 40*10G 25G service: 40*25G 40G service: 40*40G 100G service: 40*100G 200G service: 40*200G 400G service: 40*400G	100G service: 40*100G 200G service: 40*200G 400G service: 40*400G	100G service: 96*100G 200G service: 96*200G 400G service: 64*400G
Transmission Distance		≤ 120KM	PAM4 DWDM ≤ 80KM NRZ DWDM ≤ 120KM Coherent DWDM ≤ 120KM	Coherent DWDM ≤ 120KM	> 120KM
Line Side Modulation		PAM4 DWDM	NRZ DWDM/ PAM4 DWDM/ Coherent DWDM	Coherent DWDM	Coherent DWDM
Client Side	Application	Ethernet	Ethernet /SDH/OTN/FC	Ethernet /OTN	Ethernet /OTN
	Working Rate	100Gpbs	10/25/40/100/200/400Gpbs	100G	100G/400G
	Working Wavelength	850/1310nm	ITU-T DWDM	850/1310nm	850/1310nm
Network Planning		Point-to-point	Point-to-point	Point-to-point	Point-to-point / chain / ring network, etc.
Fiber Resources		Single fiber / Dual fiber	Dual fiber	Dual fiber	Dual fiber
Equipment Cost		Low	Low	Relatively high	Relatively high
Use and Maintenance		Simple operation, low requirements for use and maintenance personnel	Simple operation, low requirements for use and maintenance personnel	Simple operation, low requirements for use and maintenance personnel	The operation is relatively complicated, and the requirements for the use and maintenance personnel are relatively high

## 100G/200G/400G DWDM DCO for Metro and Backbone

PRODUCT »



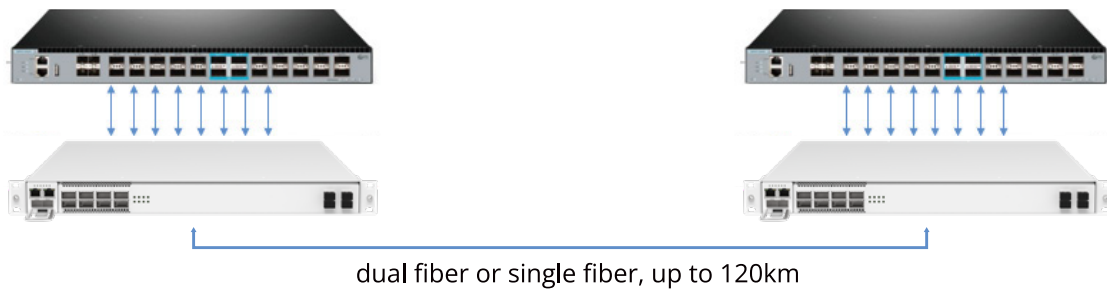
Product Items	100G CFP2 DCO	200G CFP2 DCO	400G CFP2 DCO	400G QSFP-DD DCO ZR
Modulation	100G PM-QPSK	200G PM-16QAM	400G PM-16QAM	400G PM-16QAM
RX OSNR Tolerance	12dB/0.1nm	18.5dB/0.1nm	23dB/0.1nm	26dB/0.1nm
Reach	2000KM	800KM	400KM	120KM
Power Consumption	22W	22W	26W	16.5W

# 1U 800G DCI DWDM Smart BOX

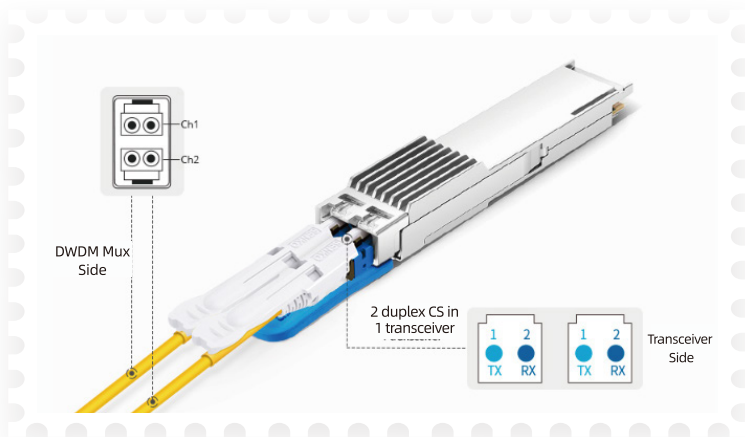


## ■ Features

- 1U Chassis, Support 0~120KM point-to-point transmission without middle repeater stations
- 50G/λDWDM technology, Improve the utilization of wavelength resources and system capacity
- Convenient deployment and rapid opening of services, Support automatic adjustment of dispersion and power
- Good Universality, One set of system can cover various of scenarios application, Avoid buying multiple sets of spare parts
- Support dual / single fiber core transmission, Save fiber resources and CAPEX
- Support Web/SNMP/CLI management



## 100G QSFP28 2x 50G PAM4 DWDM CS Connector Optical Transceiver GQS-Dxx101-05C



## ■ Features

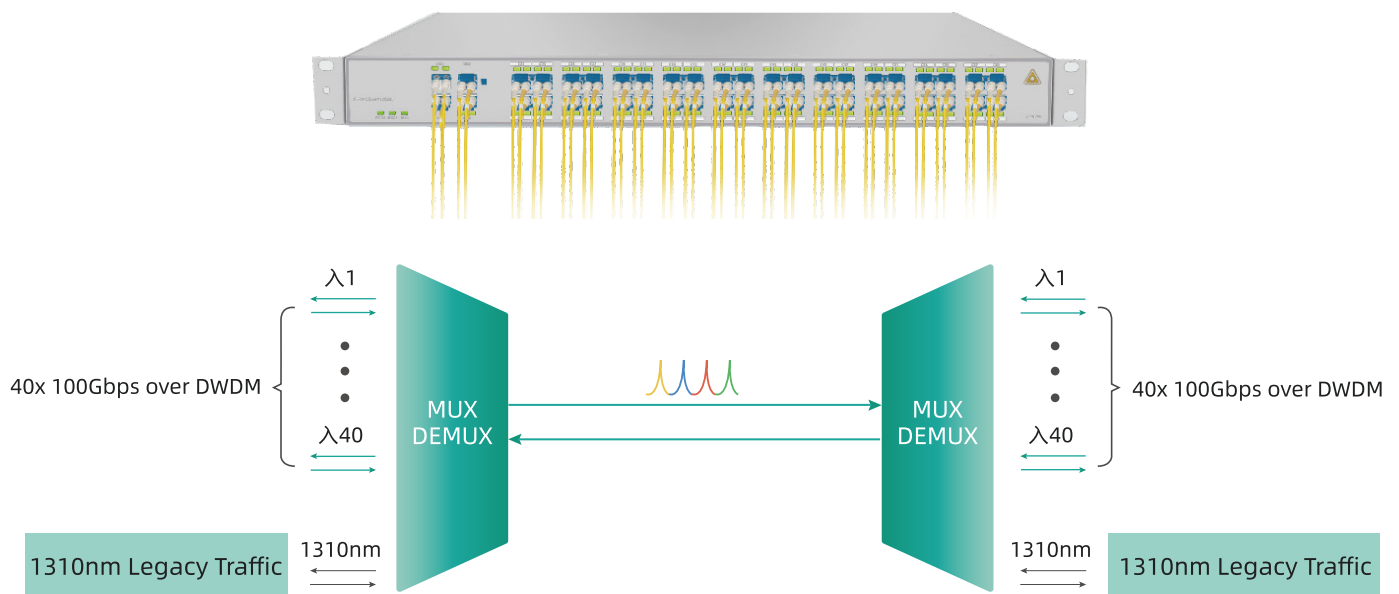
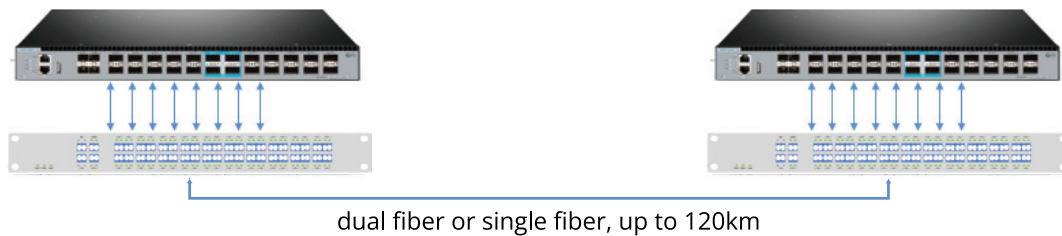
- Hot pluggable QSFP28 MSA form factor
- Up to 80km with EDFA and DCM
- Transmitter: 2x 50G PAM4 DWDM cooled EML TOSA
- Receiver: 2x 50G PAM4 PIN ROSA
- 4\*25G CAUI4 electrical interface
- Integrated SFEC with high coding gain and BERT monitor
- Full C-band 100GHz ITU DWDM wavelength grid compatible
- Dual CS adapter

# Smart Optical Line System



## ■ Features

- Support DWDM signal access of various coding technology types: PAM4 (40G/100G), NRZ(1-32G), Coherent (QPSK/8QAM/16QAM)
- Supports dispersion/power dynamic adaptive compensation
- Support optical fiber cable link length, fault monitoring and location
- Support 1+1 optical line protection
- Support 40CH TX/RX, 1310 TX/RX, COM port power real-time high-precision monitoring
- Support 1310nm 40/100G expansion channel, OSC channel
- The device panel supports visual port service power status and yellow-green dual-color LED alarm
- Realize the centralized visualization and unified management of 40 service ports' optical power
- Support Web/SNMP management



# 1U 1.6T DCI BOX 1.0



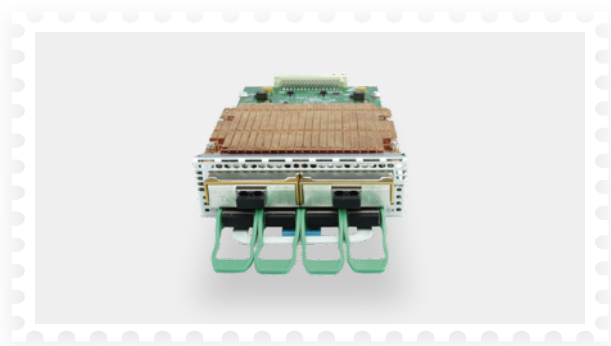
## ■ Features

- Single or mixed connection of 100G services on client-side QSFP28 interfaces
- Intelligent B/S architecture for open network
- Supports Web and NetRiver managements based on SNMP
- Simple operation and maintenance based on SDN with open APIs to be quickly automated and integrated in any IT operating environment for rapid service deployment

## ■ Specifications

Parameters	Specifications
Client-side Rate	100GE/OTU4
Line-side Rate	100G/200G/400G
Power Consumption	≤350W
Dimensions (W×H×D)	482.6mm×44.5mm×400mm
Power Supply	AC (100V to 240V, 50Hz to 60Hz), DC (36V to 72V)

## 2×200G CFP2 OTU Card for 1U 1.6T DCI BOX (8×200G)



## ■ Specifications

Parameters	Specifications
Access Signal Rate	103Gbps to 112Gbps
Client-side interface	4×100G QSFP28 SR4/LR4/CWDM4/PSM4
Line-side interface	2×200G CFP2 DCO
Power Consumption	≤75W

## 400G CFP2 OTU Card for 1U 1.6T DCI BOX (4×400G)

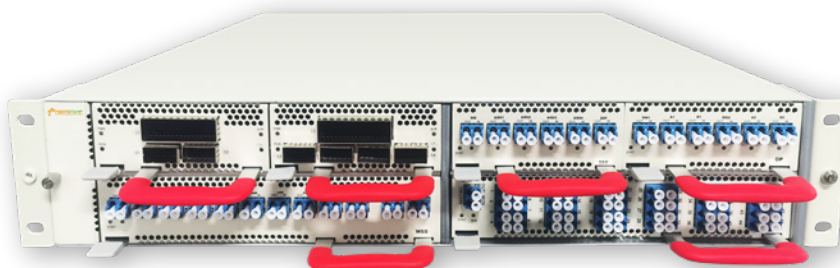


## ■ Specifications

Parameters	Specifications
Access Signal Rate	103Gbps to 112Gbps
Client-side interface	4×100G QSFP28 SR4/LR4/CWDM4/PSM4
Line-side interface	1×400G CFP2 DCO
Power Consumption	≤50W



# 2U 6.4T DCI BOX 2.0



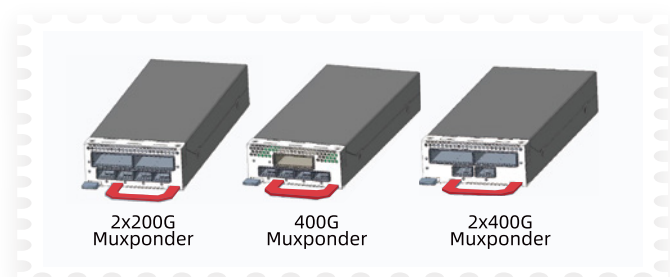
## ■ Features

- Unified 2U rack integrated Optical layer and electrical layer boards-access
- ROADM function supported up to 9 dimensions
- Flexible configuration of 100G/200G/400G rates on line-side CFP2/QSFP-DD interfaces
- Supports Web, CLI (telnet and console) and NetRiver managements based on SNMP
- Simple operation and maintenance based on SDN with open APIs to be quickly automated and integrated in any IT operating environment for rapid service deployment

## ■ Specifications

Parameters	Specifications
Client-side Rate	400GE/100GE/OTU4 or 10GE/OC-192/STM-64/8GFC/10GFC/16GFC
Line-side Rate	100G/200G/400G
ROADM Dimension	9
Power Consumption	≤300W
Dimensions (W×H×D)	440mm×88mm×420mm
Power Supply	AC (90V to 264V, 50/60Hz), DC (-36V to +60V)

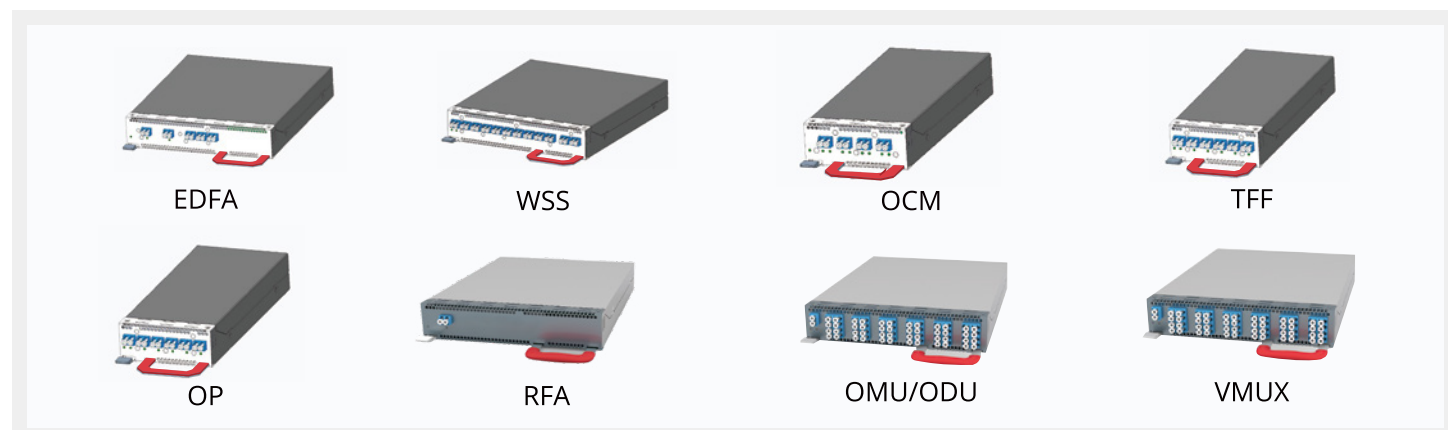
## 2\*200G CFP2 OTU Card for 2U 6.4T DCI BOX (16×400G)



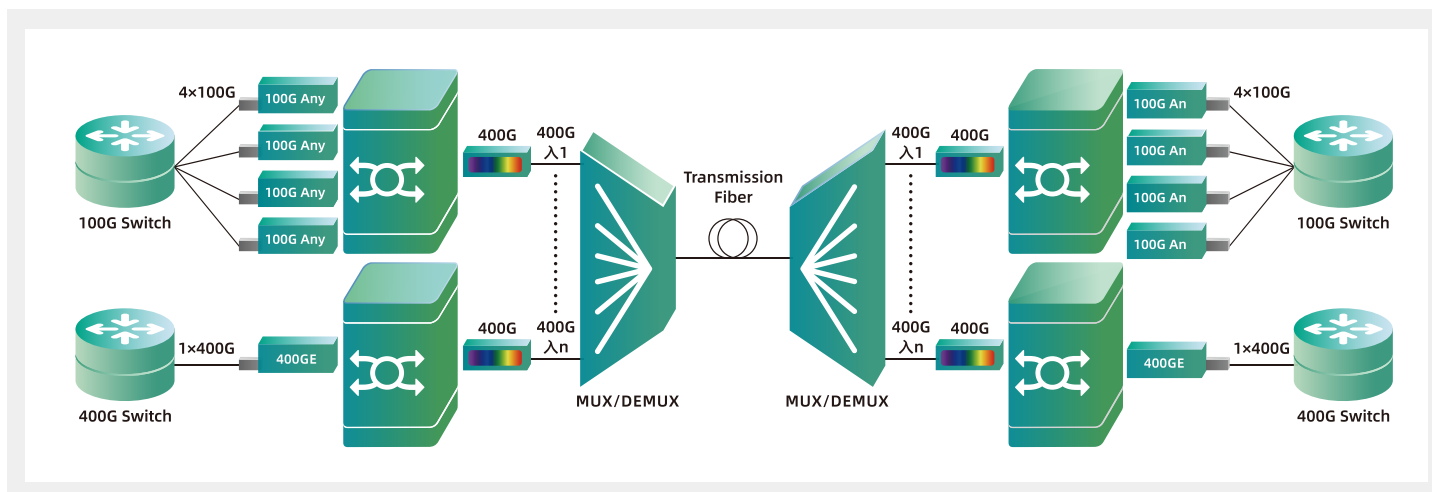
## ■ Specifications

Access Signal Rate	Client-side Interface	Line-side Interface	Power Consumption
103Gbps to 112Gbps	4* 100G QSFP28	2* CFP DCO	≤75W
103Gbps to 112Gbps	4* 100G QSFP-DD	1* 400G CFP2 DCO	≤68W
400GE	2* 400G QSFP-DD	2* 400G CFP2 DCO	≤135W

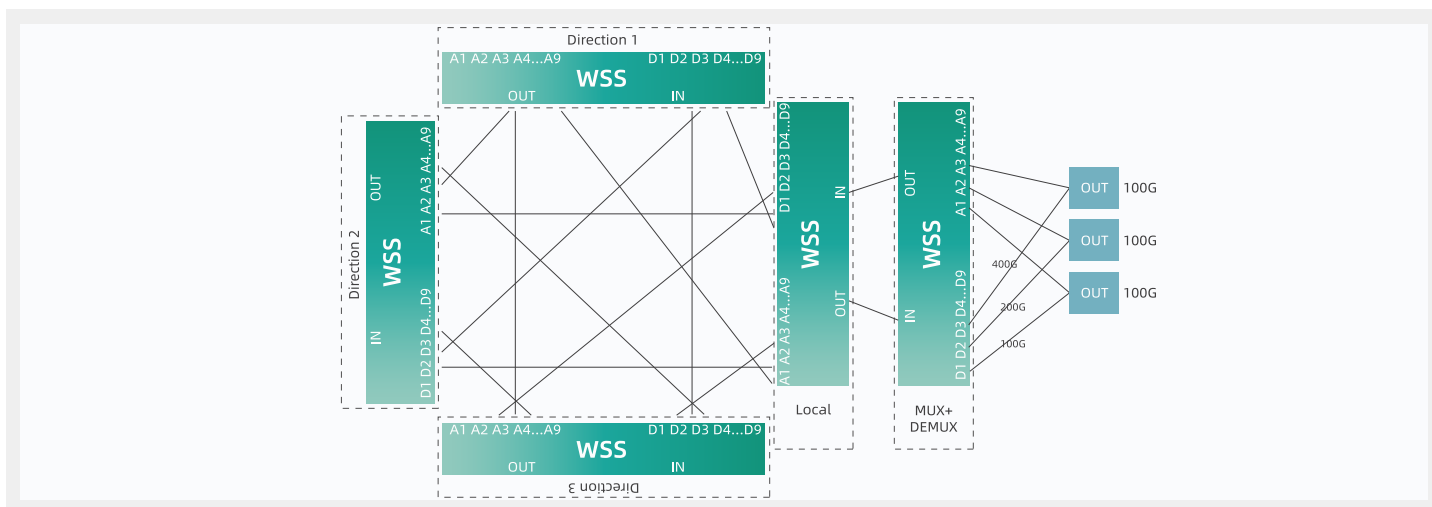
## Optical Layer Service Cards



## Wavelength Division Transmission



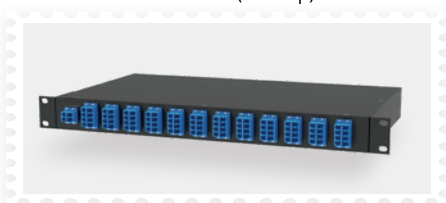
## Typical ROADM Site Configuration



# Passive DWDM Racks

## 48CH 100GHz DWDM MUX DEMUX (1U Rack)

Typical insertion loss < 4.0 dB (Gaussian)  
or < 6.0 dB (Flat-top)



## 64CH 75GHz DWDM MUX DEMUX (2U Rack)

Typical insertion loss < 6.0 dB (Flat-top)



## 96CH 50GHz DWDM MUX DEMUX (2U Rack)

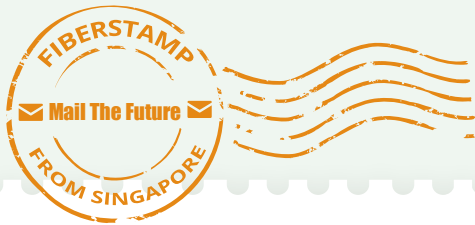
Typical insertion loss < 7.3 dB (Flat-top)







## Features

- Compliant with ITU G.694.1
- 1% monitor port for easy troubleshooting without downtime
- LC/UPC duplex connector
- Telcordia GR-1209-CORE and CR-1221-CORE compliant
- RoHS compliant

PLEASE FEEL  
FREE TO  
CONTACT US!



 Sales: [sales@fiberstamp.com](mailto:sales@fiberstamp.com)  
 Tech Support: [tech@fiberstamp.com](mailto:tech@fiberstamp.com)  
 Buy Online: [amazon.com/fiberstamp](https://amazon.com/fiberstamp)  
 Watch on YouTube: [youtu.be/KbhHA4kLBy8](https://youtu.be/KbhHA4kLBy8)



[www.fiberstamp.com](http://www.fiberstamp.com)

